

# Placement Brochure 2025–26

**BITS Pilani Dubai Campus**

Reach out to us at [placement@dubai.bits-pilani.ac.in](mailto:placement@dubai.bits-pilani.ac.in)





# Table of Contents

## 1. Introduction

Discover what sets BITS Dubai apart

## 2. Key Highlights

Why our Graduates stand out

## 3. Why Recruit

Access to industry-ready talent built to deliver impact from day one.

## 4. Academic Programmes

Set of domains and branches offered at BITS Dubai

## 5. Student Demographics

The profiles and diversity of our student community

## 6. The Placement Timelines

Step-by-step unfolding of our placement process

## 7. Placement Statistics

Insights into our placement outcomes & numbers

## 8. Recruiting Partners

A glance at companies that hired from BITS Dubai

## 9. Important References

Quick links to detailed placement resources & tools

## 10. Contact Information

Get in touch with the Placement Unit

# Introduction



Established in 2000, the Dubai campus carries forward the dedication of BITS Pilani to providing its students with world-class education that combines academic rigour, intellectual stimulation, state-of-the-art technology and facilities and an all-round personality development to deliver values, capabilities and skills for a global and knowledge-based economy.

The vibrant campus offers an excellent academic infrastructure catered with a well experienced and dedicated faculty committed to shaping future leaders. At BITS Dubai, students acquire learning skills, creativity, teamwork and leadership qualities that aid their growth in the professional world.

The professional activities at the campus have no parallel and is among the very few institutions in the middle east to have recognised student chapters of professional societies such as IEEE, ASHRAE, SAE, ACM, SWE, ASME to name a few. The institute has made great progress in the last 2 decades and is committed to the highest standards of academic excellence with continuous innovation in curriculum and pedagogy, Pervasive industry engagement and enriched campus life.

## Licensed and Accredited by



UNITED ARAB EMIRATES  
MINISTRY OF HIGHER EDUCATION  
& SCIENTIFIC RESEARCH



مفوضية الاعتماد الأكاديمي  
Commission for Academic Accreditation

# Key Highlights

- **Highly Competitive Admissions:** Admission to BITS Dubai is through BITSAT, one of India's most challenging entrance examinations, as well as through merit-based selection in the 10+2 examination.

- **Institute of Eminence:** BITS Pilani ranks among UAE's top institutions and holds the prestigious **5 star rating** given by KHDA.

**Project-Driven Curriculum:** The academic structure emphasizes

- hands-on learning through research, interdisciplinary innovation, and industry collaboration.

**Internship Ecosystem:** Students gain real-world exposure through

- internships at top-tier firms before placements.

**Empowered Alumni Network:** A strong global alumni base in

- leading tech and consulting firms supports students through mentorship, referrals, and opportunities.

BITS Dubai consistently produces **industry-ready individuals** equipped with fast-paced, innovation-driven environments.

FALCON X

MASER<sup>®</sup>  
BEYOND YOUR IMAGINATION

★★★★★  
KHDA 5 STAR RATING  
YEAR 2022

QS Rank# 154  
ASIA UNIVERSITY  
RANKINGS 2026

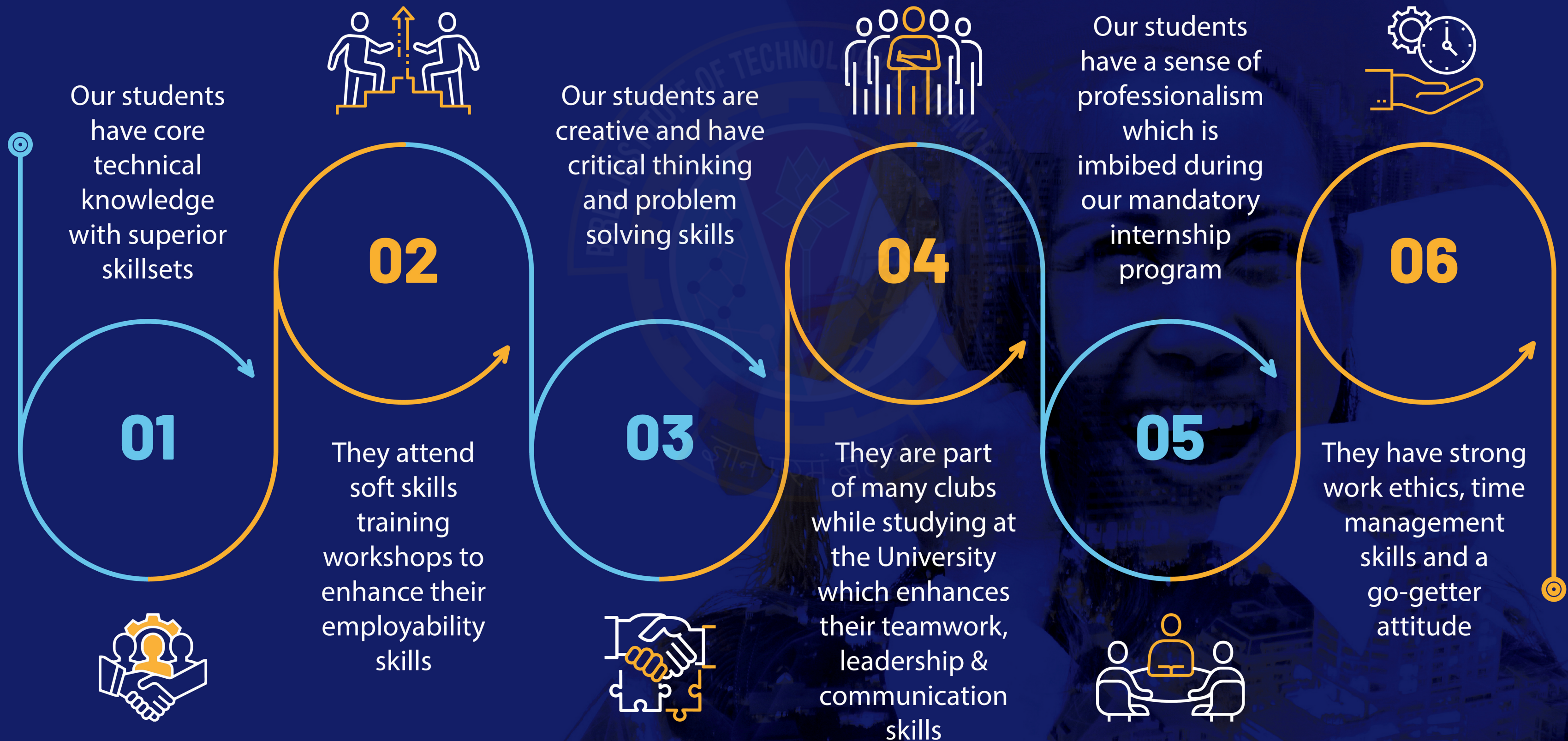
THE TOP 250  
ASIA UNIVERSITY  
RANKINGS 2025

15

unicorns founded by BITS alumni  
(with a valuation of \$1 billion or more)



# Why Recruit from the BITS Pilani, Dubai Campus?





# Academic Programmes

## First Degree courses offered

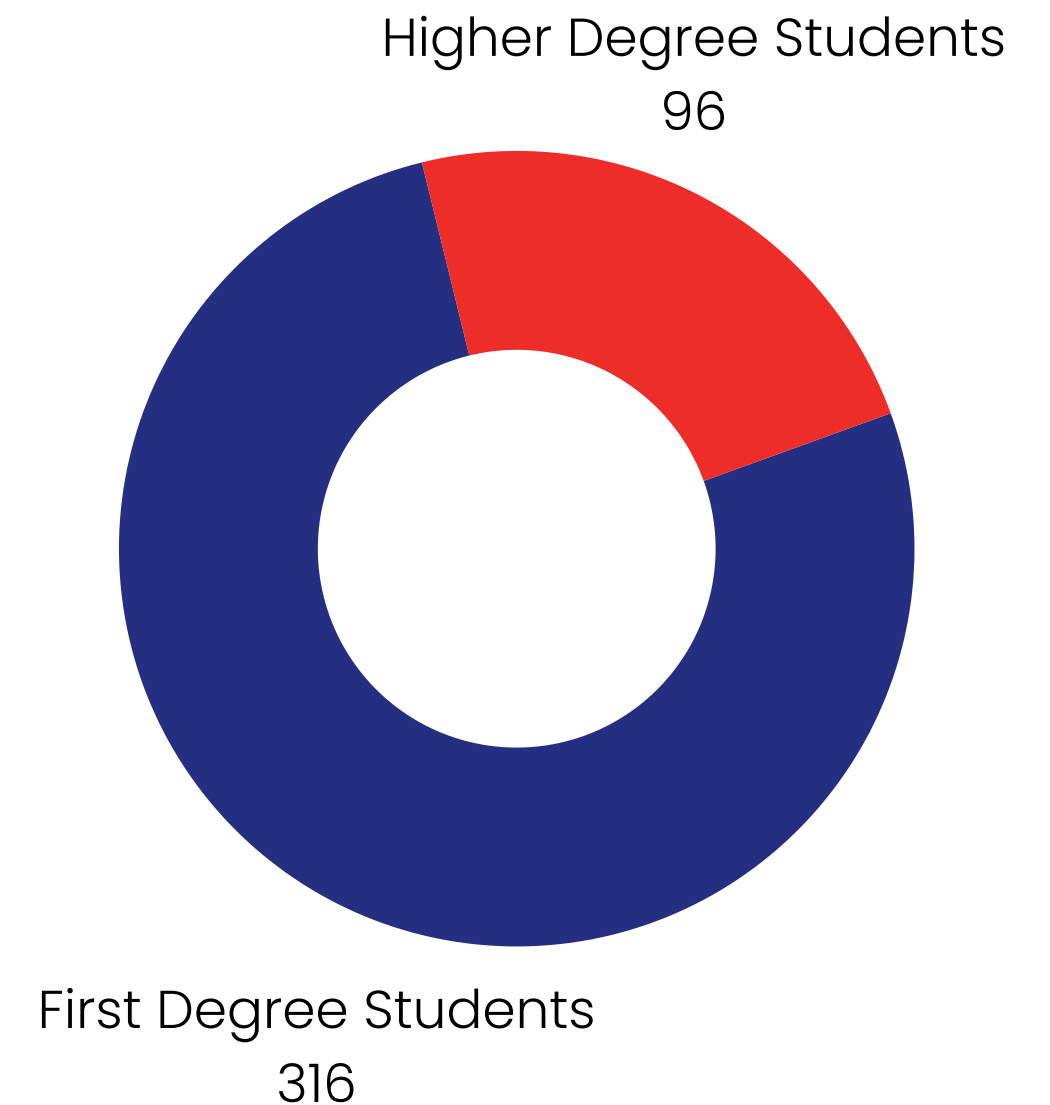
- B.E. Chemical
- B.E. Civil
- B.E. Electrical & Electronics (EEE)
- B.E. Mechanical
- B.E. Computer Science
- B.E. Biotechnology
- B.E. Electronics & Communication (ECE)

## Higher Degree courses offered

- M.E. Software Systems
- M.E. Power Electronics & Drives
- M.E. Design Engineering
- MBA
- MBA (Business Analytics)

## Batch Distribution

First Degree vs Higher Degree Students





# Student Demographics

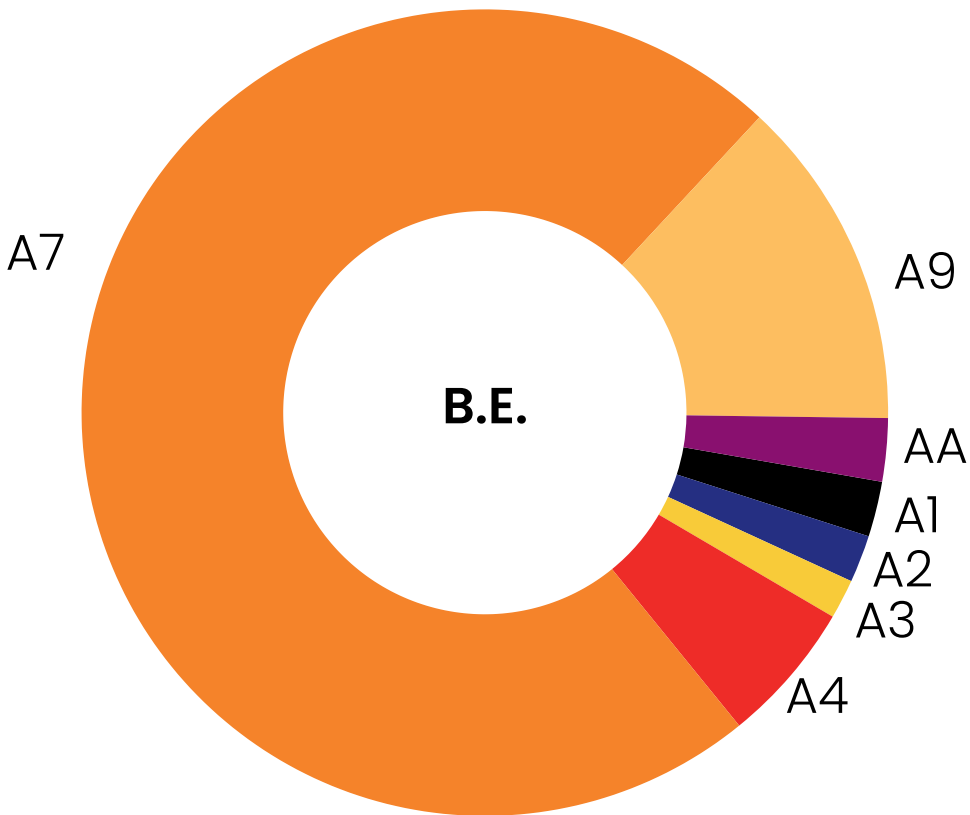
The 2025–26 graduating batch includes 412 students, with around 33% female representation.



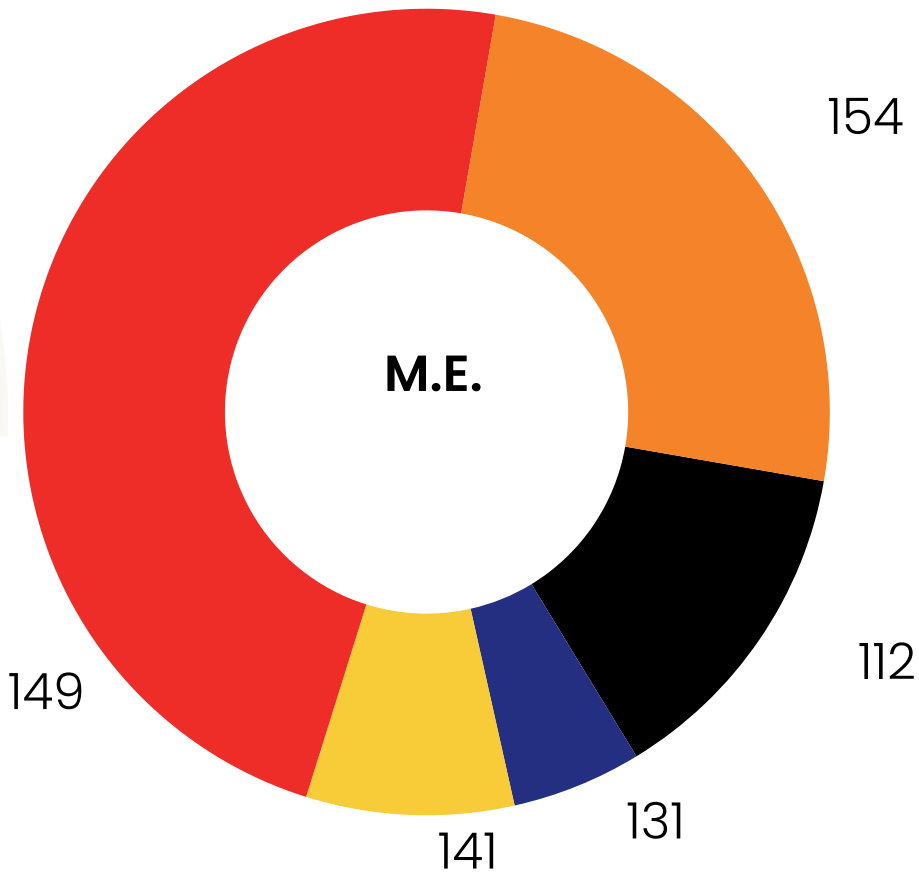
33%  
Females



67%  
Males



Stream	No Of Students
A1 -B.E. Chemical	7
A2 -B.E. Civil	6
A3 -B.E. EEE	5
A4 -B.E. Mechanical	18
A7 -B.E. Computer	230
A9 -B.E. Biotechnology	42
AA -B.E. ECE	8



Stream	No Of Students
112 - M.E. Software Systems	13
131 - M.E. Power Electronics &	5
141 - M.E. Design Engineering	8
149 - M.E. MBA	46
154 - M.E. MBA (Business	24



# The Placement Timelines





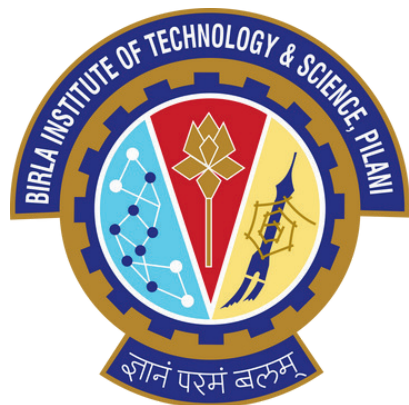
# Collaboration with over 300 Companies for Internships/Placements





# Contact Us

Team Members	Designation	Contact Details	Mail IDs
Mr. Abdul Razzak Sohail	Manager - Career Services	+971-504370900	<a href="mailto:abdul.razzak@dubai.bits-pilani.ac.in">abdul.razzak@dubai.bits-pilani.ac.in</a>
Mr. Amsal Muneeb	Sr. Executive - Career Services	+971-566001267	<a href="mailto:amsal@dubai.bits-pilani.ac.in">amsal@dubai.bits-pilani.ac.in</a>
Mrs. Hemali Soni	Executive - Career Services	+971-566384377	<a href="mailto:hemali@dubai.bits-pilani.ac.in">hemali@dubai.bits-pilani.ac.in</a>
Mr. Bharat Gupta	Coordinator - Career Services	+971-524661259	<a href="mailto:f20220072@dubai.bits-pilani.ac.in">f20220072@dubai.bits-pilani.ac.in</a>



# Thank you

**Career Services Division**

BITS Pilani Dubai Campus

Reach out to us at [placement@dubai.bits-pilani.ac.in](mailto:placement@dubai.bits-pilani.ac.in)